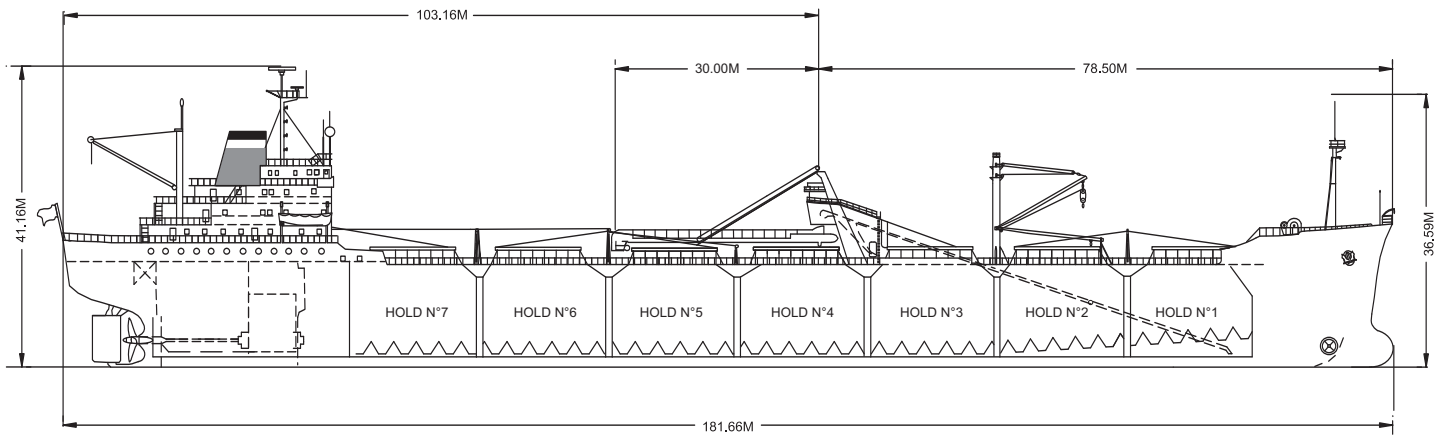
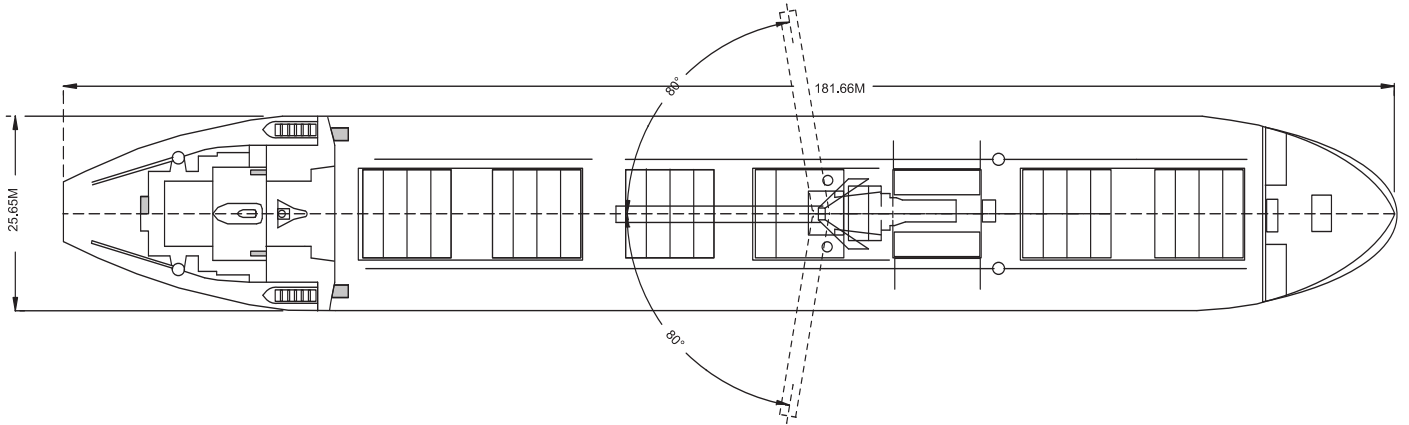
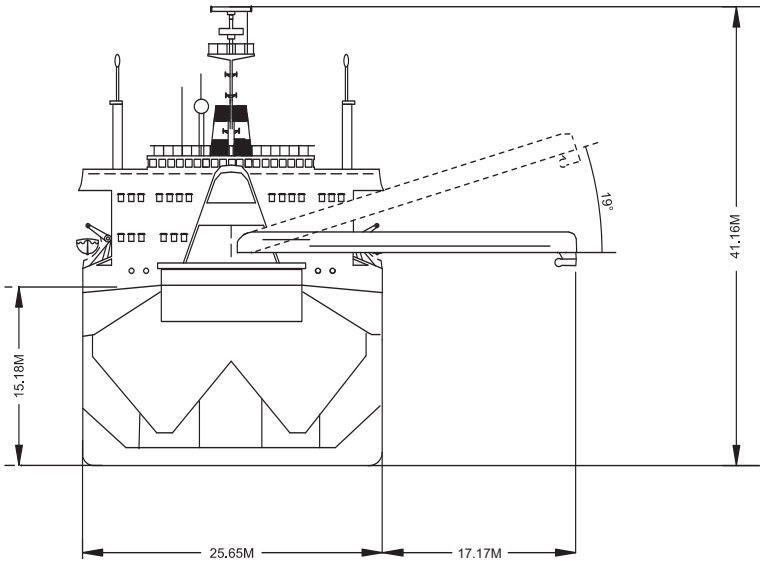




The CSL Cabo unloads gypsum into a barge alongside.

Built	1971
Classification	Lloyds +100 A1
Length Overall	181.66 metres
Breadth Moulded	25.66 metres
Depth Moulded	15.19 metres
Total Hold Capacity (including hatches)	23,985.00 cubic metres
Deadweight	31,365 tonnes
Draft	10.926 metres
Gross Tonnage	19,623 tonnes
Net Tonnage	8,129 tonnes
Bow Thruster	880 kW
Length of Boom	30.00 metres
Discharge Rate	-Gypsum	1,500 tonnes/hr
	-Stone	1,800 tonnes/hr



0981-04 12/08/04

Air Drafts												
(metres)												
Draft Condition	Stem	Foremast	Hatches			Cargo Gear	Main Mast		Funnel	Stern	Other Obstruction*	Maximum
			Forward	Midship	Aft		Deployed	Lowered				
Keel	19.60	31.40	20.90	17.75	17.75	29.80	41.16	N/A	33.0	N/A	Forward Cargo Gear	26.28
Light Ship	15.09	30.44	20.00	15.00	13.00	27.05	36.09	N/A	28.4	N/A	Forward Cargo Gear	25.38
Normal Ballast 50% Bunker	11.86	27.12	16.62	11.58	9.86	23.78	33.42	N/A	25.2	N/A	Forward Cargo Gear	22.00
Fully Loaded 50% Bunker	7.54	21.63	10.93	6.68	5.54	18.88	29.10	N/A	20.9	N/A	Forward Cargo Gear	16.51

Hatch and Hold Specifications									
Hold Number	1	2	3	4	5	6	7	TOTAL	
Hold Volumes (cubic metres)									
Cubic	2,152.0	3,197.0	3,659.0	3,729.0	3,729.0	3,729.0	3,790.0	23985.0	
Maximum Grain	1,930.0	2,868.0	3,282.0	3,345.0	3,345.0	3,345.0	3,400.0	21515.0	
Grain in way of Hatch	193.7	193.7	129.2	96.8	193.7	193.7	193.7	1194.5	
Hold Openings (metres)									
Number of Openings	1	1	2	1	1	1	1	8	
Opening Length	11.39	11.54	11.39	5.63	11.36	11.36	11.36		
Opening Width	12.00	12.00	3.70	12.00	12.00	12.00	12.00		
Coaming Height above Keel	17.20	17.20	17.26	17.26	17.26	17.26	17.26		
Hatch Information (metres)									
Description Operation	McGregor Wire ropes, Mooring Winch	McGregor Wire ropes, Mooring Winch	McGregor Wire ropes, Mooring Winch	McGregor Wire ropes, Mooring Winch	McGregor Wire ropes, Mooring Winch	McGregor Wire ropes, Mooring Winch	McGregor Wire ropes, Mooring Winch		
Hatch Length	11.81	11.82	11.67	5.91	11.64	11.64	11.64		
Hatch Width	12.23	12.23	3.98	12.23	12.23	12.23	12.23		
Hatch Top Height above Keel	17.75	17.75	17.59	17.85	17.76	17.76	17.76		

Cargo Handling Equipment
<ul style="list-style-type: none"> • Unloading Equipment: Fixed length unloading boom, 1600 tonnes per hour. Manually operated hydraulic gates. Inclined conveyor to deliver cargo to main deck.
<ul style="list-style-type: none"> • Dust Suppression System: Foam and water spray at boom end
<ul style="list-style-type: none"> • Unloader Boom Length: 30.00 metres
<ul style="list-style-type: none"> • Discharge Rate - Gypsum: 1,500 tonnes/hr - Stone: 1,800 tonnes/hr
<ul style="list-style-type: none"> • Maximum Boom Outreach: 17.17 metres

Consumption (tonnes per day)				
	Speed		Main Engine	Generators
	Loaded	Ballast	IFO	MDO
Sea	13 knots	14.5 knots	29	3
Port / Anchorage			0	2
Loading / Discharge			6	6

